



New Era® Ladies Performance Terry Short Sleeve Hoodie LNEA533



The cut-off sleeves give this hoodie a retro athletic look.

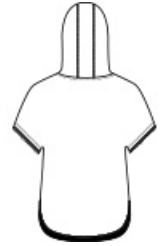
- 6.5-ounce, 100% polyester French terry
- 3-panel hood
- Heat transfer label for tag-free comfort
- Round drawcords with New Era metal tips
- Dolman sleeves with raw edge
- Black mesh detail underneath the sleeves
- Front pouch pocket
- Embossed silicone New Era flag logo on pocket
- Drop tail hem

CARE INSTRUCTIONS

Machine wash cold with like colors. Only non-chlorine bleach if needed. Tumble dry low, cool iron if necessary.

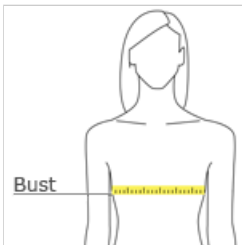


front



back

HOW TO MEASURE



BUST

Measure under the arm and around the fullest part of the bust with arms down, keeping tape horizontal.

SIZE CHART

	XS	S	M	L	XL	2XL	3XL	4XL
Size	2	4/6	8/10	12/14	16/18	20/22	24/26	28/30
Chest	32-34	35-36	37-38	39-41	42-44	45-47	48-51	52-55

COLOR INFORMATION



Black
PMS NTR BLACK C



Dusty Mauve
Heather
PMS 693C



Graphite Heather
PMS NO MATCH



True Navy Heather
PMS 533C